



My Company, LLC
1234 Main Street
Anywhere, USA 12345
Phone: (555) 234-5678
Email: mycompany@safety-com

August 11, 2018

Bill Grant
President/Owner
Best Company
1234 Main St
Anywhere, USA 12345

Re: General Industry Safety Survey
Omaha, NE

Bill,

This report is in follow-up to the safety survey completed on July 27, 2018. The purpose of the survey was to identify potential safety hazards and/or OSHA violations. Bob Smith is the contact person at this location.

Attached, is a list of safety observations and recommendations based on conditions present at the time of my visit. If you have any questions or require additional information after reading this report, please don't hesitate to contact me.

Sincerely,

John Doe
Safety Consultant
My Company, LLC
Phone: (555) 234-5678
Email: johndoe1963@cox.net

CC: Sam Miller
Tom Norton

DISCLAIMER: Observations and recommendations are purely advisory and based on practices and conditions observed and information provided at the time of this survey. They are not intended to include every loss or accident potential. It's the client's responsibility to make further observations and take whatever action that may be necessary to prevent losses, enforce safety procedures and eliminate hazardous conditions so as to comply with any federal, state, or local law, rule or regulation concerning safety and health.

Report Summary

Report Name: General Industry Safety Survey
 Completed for: Best Company
 Inspection Date: July 27, 2018
 Location: Omaha, NE
 Contact: Bob Smith, Manager
 Region: Midwest
 Score: 59.1%

S – Satisfactory, U – Unsatisfactory, Items not checked - N/A

#	Category	S	U	#	Category	S	U	#	Category	S	U
1	Aisles/Walkways			18	Grinders (Bench/Pedestal)		✓	35	Rope Decent System		
2	Aerial Work Platforms			19	Hazard Communication		✓	36	Safety Training		
3	Behaviors			20	Health Hazards			37	Scaffolds (Rolling/Baker)		
4	Bloodborne Pathogens			21	Housekeeping		✓	38	Silica Exposure		
5	Boilers			22	Ladders (Fixed)			39	Spraying Operations		
6	Combustible Dust			23	Ladders (Portable)		✓	40	Stairs and Stairways		
7	Compressed Air		✓	24	Ladders (Rolling Platform)			41	Storage		✓
8	Compressed Gas Cylinders		✓	25	Loading Docks			42	Tire Inflation		
9	Confined Spaces			26	Lockout/Tagout			43	Tools (Hand & Power)		✓
10	Cranes/Rigging		✓	27	Machine Guards (General)		✓	44	Walking-Working Surfaces		
11	Electrical Safety		✓	28	Machine Guards (Presses)			45	Welding, Cutting and Brazing	✓	
12	Emergency Action Plan			29	Machine Guards (Woodworking)		✓	46	Written Programs/Policies		
13	Exits/Egress		✓	30	Medical Services/First Aid		✓	47	Other/Misc.		
14	Fall Protection			31	Personal Protective Equipment			48	PSM		
15	Fire Safety			32	Postings/Signs			49	Merchandising		
16	Flammable Liquids		✓	33	Recordkeeping (Injury/Illness)			50			
17	Forklifts (Material Handling)	✓		34	Respirators			51			

#	Category	Observations:
7	Compressed Air	Compressed air used for cleaning is not kept under 30 psi at nozzle (1910.242) (See Photo)
8	Compressed Gas Cylinders	Not all cylinders are secured to prevent tipping (1910.101) (See Photo)
10	Cranes/Rigging	The rated load of each hoist is not marked and/or clearly legible from the ground or floor (1910.179) (See Photo) <i>Note: Several jib cranes need rating stenciled on beam</i>

10	Cranes/Rigging	Not all lifting hooks have functional safety latches (1910.179) (See Photo)
10	Cranes/Rigging	Slings are not maintained in good condition and/or they contain kinks or knots (1910.184) (See Photo)
10	Cranes/Rigging	Slings are not maintained in good condition and/or they contain kinks or knots (1910.184) (See Photo)
11	Electrical Safety	Access to breaker panels, disconnects, etc. is obstructed (i.e. proper clearance is not maintained) and/or the area around transformers and other electrical equipment is not kept clear (1910.303) (See Photo)
13	Exits/Egress	Emergency lights are not provided and/or not all functional (1910.37) (See Photo)
16	Flammable Liquids	More than 25 gallons of Category 1 flammable liquids are stored outside of approved storage cabinet or storage room (1910.106) (See Photo)
18	Grinders (Bench/Pedestal)	Work rest(s) are not all adjusted to within 1/8 inch of wheel (1910.215) (See Photo)
18	Grinders (Bench/Pedestal)	The tongue guard is not adjusted to within 1/4 inch of wheel (1910.215) (See Photo)
18	Grinders (Bench/Pedestal)	Bench/pedestal grinders are not all permanently mounted (1910.212) (See Photo)
19	Hazard Communication	Secondary chemical containers are not properly labeled and/or legible (1910.1200) (See Photo) <i>Note: Several mislabeled chemicals were found</i>
21	Housekeeping	Not all work areas are kept clean and orderly (1910.141) (See Photo) <i>Note: Serious issues relating to housekeeping were found throughout. Need to focus attention on this area.</i>
23	Ladders (Portable)	Ladders are not inspected when first used and/or not maintained in good condition 1910.23(b)(9) (See Photo) <i>Note: Overall, ladders were in good condition. Just one exception</i>
27	Machine Guards (General)	Rotating parts hazards are not all properly guarded or shielded (1910.212) (See Photo)
29	Machine Guards (Woodworking)	Hand-held circular saw blades are not all properly guarded (1910.213) (See Photo)
30	Medical Services/First Aid	Eyewash stations are not available or easily accessible when required (1910.151) (See Photo) <i>Note: Non approved eyewash station in lab should be replaced with ANSI approved unit.</i>
41	Storage	Materials are not all stored/stacked safely (1910.176) (See Photo)
43	Tools (Hand & Power)	Tools are not all inspected and maintained in good condition (1910.242) (See Photo)
43	Tools (Hand & Power)	All angle grinders are not properly guarded (1910.243) (See Photo)

Closing Comments:

Issues were reviewed with Bob prior to leaving site. He commitment to addressing all open items.

Recommendations:

1) Compressed Air

- *Do not use compressed air for cleaning purposes except where reduced to less than 30 p.s.i. at the nozzle tip and then only with effective chip guarding and personal protective equipment. Take appropriate steps to reduce air pressure as required [reference 1910.242(b)]. [View OSHA Standard](#)*
 - Responsible Party: Maintenance Manager

2) Compressed Gas Cylinders

- *Take appropriate steps to secure compressed gas cylinders in an upright position to prevent them from tipping over in accordance with Compressed Gas Association Pamphlet P-1-1965 [incorporated by reference in Sec. 1910.6]. [View OSHA Standard](#)*
 - Responsible Party: Fabrication Manager

3) Cranes/Rigging

- *Mark the rated load of the crane on each side of the crane and be sure it is clearly legible from the ground or floor [reference 1910.179(b)(5)]. [View OSHA Standard](#)*
 - Note: Several jib cranes need rating stenciled on beam
 - Severity Rating: Advisory
 - Responsible Party: Maintenance Manager
- *Visually inspect hooks daily for defects (i.e. twisted, pitted, throat opening too wide, broken/missing safety latch, etc.) and repair and/or replace hooks when defects are found [reference 1910.179(j)(2)(iii)]. [View OSHA Standard](#)*
 - Responsible Party: Maintenance Manager
- *Damaged or defective slings shall not be used. Additionally, slings shall not be shortened with knots or bolts or other makeshift devices and sling legs shall not be kinked. [reference 1910.184(c)(1),(2), &(3)] [View OSHA Standard](#)*
 - Responsible Party: Shipping Manager
- *Damaged or defective slings shall not be used. Additionally, slings shall not be shortened with knots or bolts or other makeshift devices and sling legs shall not be kinked. [reference 1910.184(c)(1),(2), &(3)] [View OSHA Standard](#)*
 - Responsible Party: Maintenance Manager

4) Electrical Safety

- *Take steps (i.e. paint lines on floor, use railing, cones, etc.) to maintain sufficient access and working space (min. 30 inches wide by 36 inches deep) in front of all electric equipment including breaker panels, disconnect switches, transformers, etc. [reference 1910.303(g)(1)]. [View OSHA Standard](#)*
 - Responsible Party: Maintenance Manager

5) Exits/Egress

- *Install emergency lighting as needed to ensure adequate lighting of all exit routes and doors during a power failure. Also, lighting should be tested monthly to ensure batteries are not dead or bulbs burned out. Repair/replace as needed [reference 1910.37(b)(1)]. [View OSHA Standard](#)*
 - Responsible Party: Maintenance Manager

6) Flammable Liquids

- *The quantity of Category 1 flammable liquids that may be located outside of an inside storage room or storage cabinet in a building or in any one fire area of a building shall not exceed 25 gallons. [reference 1910.106(e)(2)(ii)(b)(1)] [View OSHA Standard](#)*
 - Severity Rating: Serious
 - Responsible Party: Maintenance Manager, Paint Shop Manager

7) Grinders (Bench/Pedestal)

- *Adjust (or install if missing) the work rest on grinders to within one-eighth inch of the wheel to prevent items from being jammed between the wheel and the work rest [reference 1910.215(a)(4)]. [View OSHA Standard](#)*
 - Responsible Party: Maintenance Manager
- *Adjust (or install if missing) the tongue guard on grinders to within one-fourth inch of the wheel [reference 1910.215(b)(9)]. [View OSHA Standard](#)*
 - Responsible Party: Maintenance Manager
- *Make sure all equipment (i.e. bench or pedestal grinders) designed for a fixed location are securely anchored to prevent walking or moving [reference 1910.212(b)]. [View OSHA Standard](#)*
 - Responsible Party: Maintenance Manager

8) Hazard Communication

- *When hazardous chemicals are transferred to secondary containers (except when intended for immediate use), the employer shall ensure that each container is labeled, tagged or marked with the product identifier and words, pictures, symbols, or combination thereof (i.e. HMIS Labels), which provide at least general information regarding the hazards of the chemicals, and which, in conjunction with the other information immediately available to employees under the hazard communication program, will provide employees with the specific information regarding the physical and health hazards of the hazardous chemical. The label shall be legible. [reference 1910.1200(f)(6)(ii)] [View OSHA Standard](#)*
 - Note: Several mislabeled chemicals were found
 - Responsible Party: Fabrication Manager

9) Housekeeping

- *Take steps to ensure all places of employment are kept clean and organized to the extent that the nature of the work allows [reference 1910.141(a)(3)(i)]. [View OSHA Standard](#)*
 - Note: Serious issues relating to housekeeping were found throughout. Need to focus attention on this area.

10) Ladders (Portable)

- *Ladders shall be inspected before initial use in each work shift, and more frequently as necessary, to identify any visible defects that could cause employee injury. [reference 1910.23(b)(9)] [View OSHA Standard](#)*
 - Note: Overall, ladders were in good condition. Just one exception
 - Severity Rating: Moderate
 - Responsible Party: Maintenance Manager

11) Machine Guards (General)

- *Install guards or shields on machines to prevent placing a body part in the rotating parts hazard of a machine (i.e. chuck guard or shield on drill presses or lathes, fixed guard on rotating shaft, etc.) [reference 1910.212(a)(3)(ii)]. [View OSHA Standard](#)*
 - Responsible Party: Maintenance Manager

12) Machine Guards (Woodworking)

- *Make sure the self-adjusting guard on circular saws is in place and functioning properly to prevent accidental contact with saw blade. Repair or replace as needed [reference 1910.213(a)(12)]. [View OSHA Standard](#)*
 - Severity Rating: Serious
 - Responsible Party: Maintenance Manager

13) Medical Services/First Aid

- *Provide suitable facilities for quick flushing of the eyes for immediate emergency use (i.e. access must be unobstructed) wherever employees may be exposed to injurious corrosive materials [reference 1910.151(c)]. [View OSHA Standard](#)*
 - Note: Non approved eyewash station in lab should be replaced with ANSI approved unit.

14) Storage

- *Materials in storage should be stacked, blocked, interlocked and limited in height so that they are stable and secure against sliding or collapse. Avoid leaning items on end unless secured to prevent them from falling over [reference 1910.176(b)]. [View OSHA Standard](#)*
 - Responsible Party: Warehouse Manager

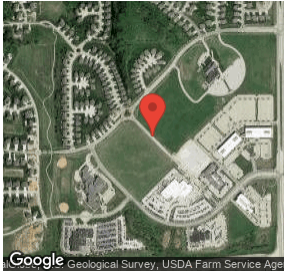
15) Tools (Hand & Power)

- *Require employees to inspect and maintain tools and equipment in a safe condition. Tag and remove from service any damaged or defective tools until repairs can be made or discard if repairs are not possible [reference 1910.242(a)]. [View OSHA Standard](#)*
 - Responsible Party: Fabrication Manager
- *Require use of safety guards on portable angle grinders and the guard must be located between the operator and the wheel during use [reference 1910.243(c)(3)]. [View OSHA Standard](#)*
 - Responsible Party: Maintenance Manager

Submitted by:
John Doe

Safety Consultant
My Company, LLC
(555) 234-5678
johndoe1963@cox.net

DISCLAIMER: Observations and recommendations are purely advisory and based on practices and conditions observed and information provided at the time of this survey. They are not intended to include every loss or accident potential. It's the client's responsibility to make further observations and take whatever action that may be necessary to prevent losses, enforce safety procedures and eliminate hazardous conditions so as to comply with any federal, state, or local law, rule or regulation concerning safety and health.



Geo-Tag Information:
Latitude: 41.267246
Longitude: -96.201962
Date: 07/27/2018
Time: 06:46 PM (CDT)

Inspector Signature:

Handwritten signature of the inspector in black ink.

X

Fri Jul 27 2018 20:14:44 GMT-0500 (CDT)

Site Contact Signature:

Handwritten signature of the site contact in black ink.

X

Fri Jul 27 2018 20:14:44 GMT-0500 (CDT)



Non-compliant air nozzle



Example of compliant air nozzle in shipping



Non-compliant air nozzle



Example of proper cylinder storage



Example of cylinders NOT stored properly



Example of cylinders NOT stored properly



Jib crane load limits are not legible from ground



Safety latch is broken - East bay



Defective lifting hook



Defective wire rope sling in Yard



Defective chain sling in shop



Door to storage closet in basement is properly marked NOT AN EXIT



Blocked electrical panel in QA lab



Blocked electrical panels in MCC2



Damaged wire rope sling in shipping area



Proper chemical storage near Maintenance area



Emergency lights above door in west Bay are not working



Emergency lights outside Breakroom are not working



Tongue guard not adjusted properly



Improper storage of flammables in outside storage building



Grinder should be mounted to work bench and guards installed



Paint shop could use two more flammable storage cabinets



More flammable storage cabinets are needed



Guards not adjusted properly



Tongue guard not adjusted properly



Cutting fluid in soda bottle? Seriously?



Need HMIS label



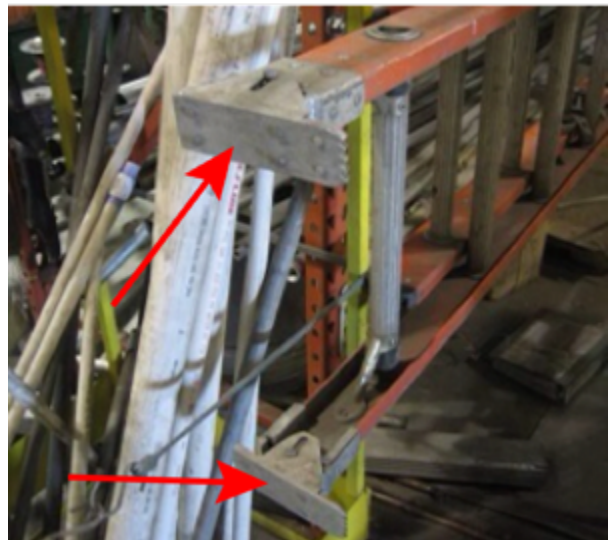
Secondary containers not properly labeled



Poor housekeeping in MCC2



Are you kidding me!?



Non-skid feet on straight ladder in Shop are missing



Non approved eye wash and bottles were expired



Drill press in Maintenance Shop needs a chuck guard



Bolt is being able send to bypass guard



Need to address material storage issues



